

SUMITOMO CHEMICAL

***Creating What
the Earth Needs
Next.***



CORPORATE PROFILE

Fast Facts

Founded in

1913

Number of overseas facilities

62

(As of April, 2025)

Number of consolidated subsidiaries

168

(As of March 31, 2025)

Number of consolidated employees

29,279

(As of March 31, 2025)

Consolidated sales revenue

2,606.3

billion yen
(FY2024)

Number of patents held

13,540

(As of March 31, 2025)

Management Principles

- ◆ **We commit ourselves to creating new value by building on innovation.**
- ◆ **We work to contribute to society through our business activities.**
- ◆ **We build a vibrant corporate culture and continue to be a company trusted by society.**

Profile

Sumitomo Chemical has its origins in the Sumitomo Fertilizer Manufactory, which was founded to resolve the air pollution problem caused by Sumitomo's copper smelting operation at the Besshi Copper Mine (now Niihama, Ehime Prefecture, Japan). The air was cleaned by removing the sulfur from the copper ore and the company used sulfur to manufacture fertilizer. Founded to overcome environmental problem and improve agricultural production at the same time, Sumitomo Chemical has inherited the Sumitomo Spirit, proving itself worthy of society's trust and the credo, "Our business must benefit society at large, not just our own interests".

Both principles have been passed down to us over generations since our inception.

Under these principles, Sumitomo Chemical responds to the changing needs of time, develops a diversified portfolio of businesses, and enriches people's lives through constant technological innovations.

Providing solutions to the challenges facing society

Sumitomo Chemical's Strengths

CORE COMPETENCE

1

⇒ P.6-7

Ability to Develop Innovative Solutions

by Leveraging Its Technological
Expertise in Diverse
Areas



CORE COMPETENCE

2

⇒ P.8-9

Access to Global Markets



CORE COMPETENCE

3

⇒ P.10-11

Our Highly Engaged and Diverse Human Resources

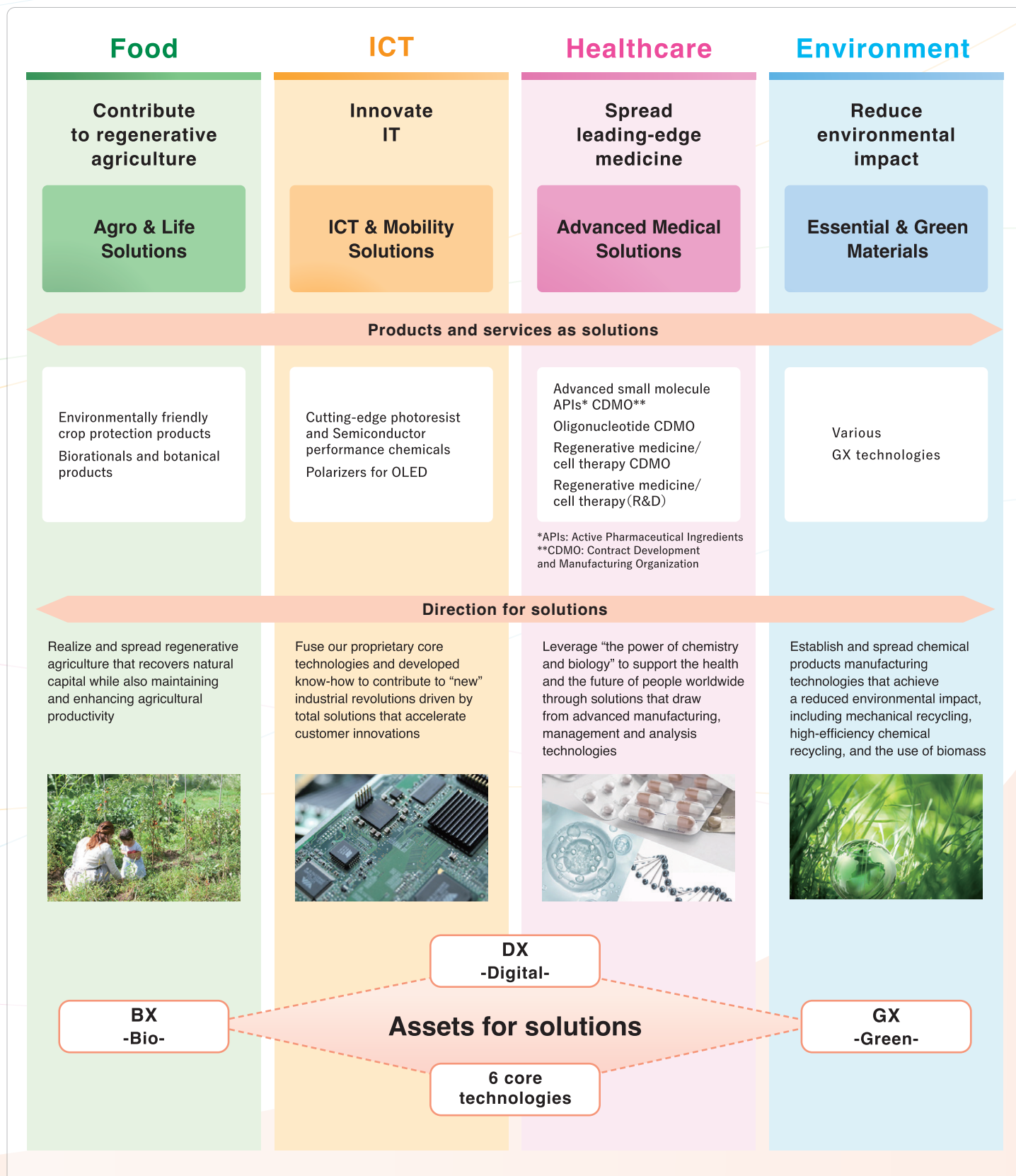


Sumitomo Chemical recognizes three core competencies: Its ability to develop innovative solutions by leveraging its technological expertise in diverse areas, its access to global markets, and its highly engaged and diverse human resources. These three cores have been cultivated under the tenets of its Management Principles. Making the most of these competences, Sumitomo Chemical is fully focused on solving social issues surrounding the environment and food, and improving the quality of life of people.

Long-term vision

Innovative Solution Provider

Become a company that leverages innovative technologies to solve society's challenges



CORE
COMPETENCE

1

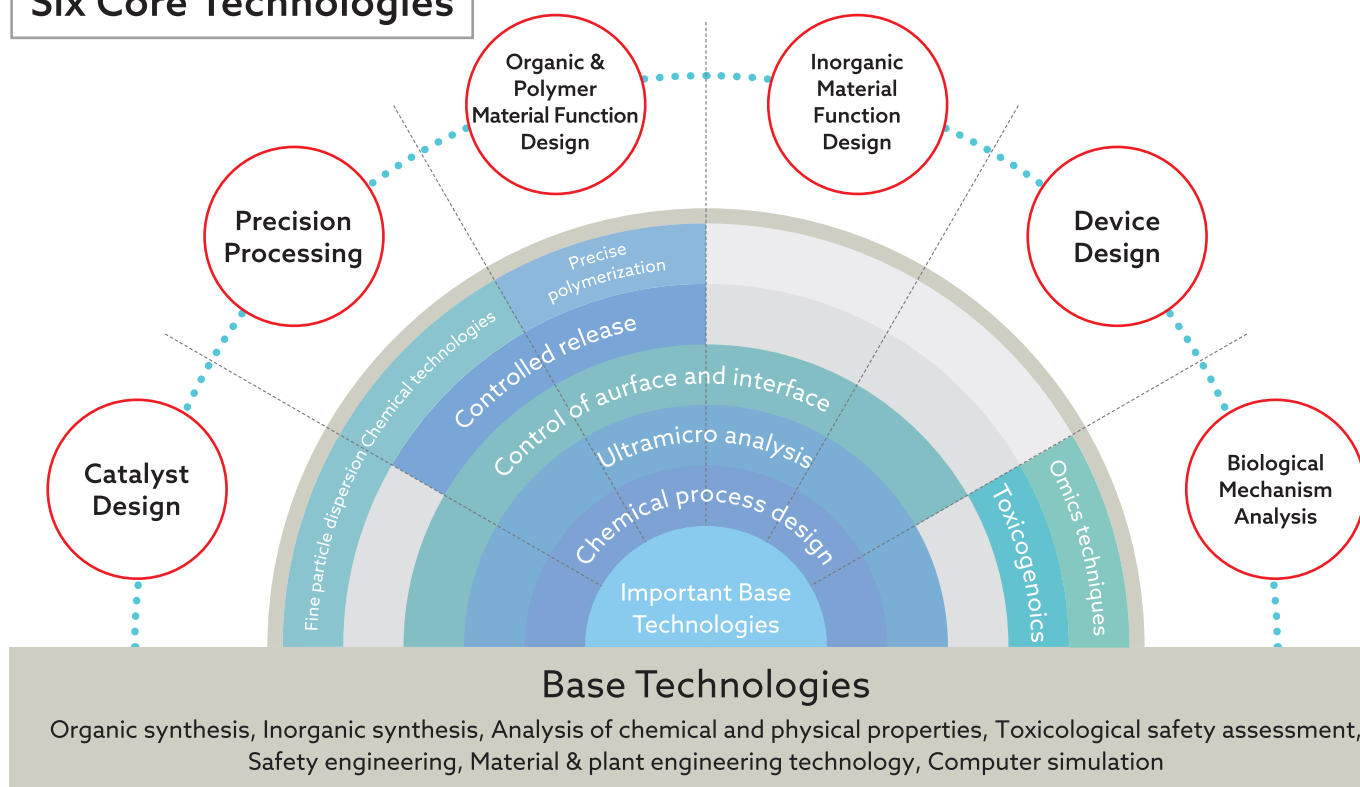
Ability to Develop Innovative Solutions

by Leveraging Its Technological Expertise in Diverse Areas

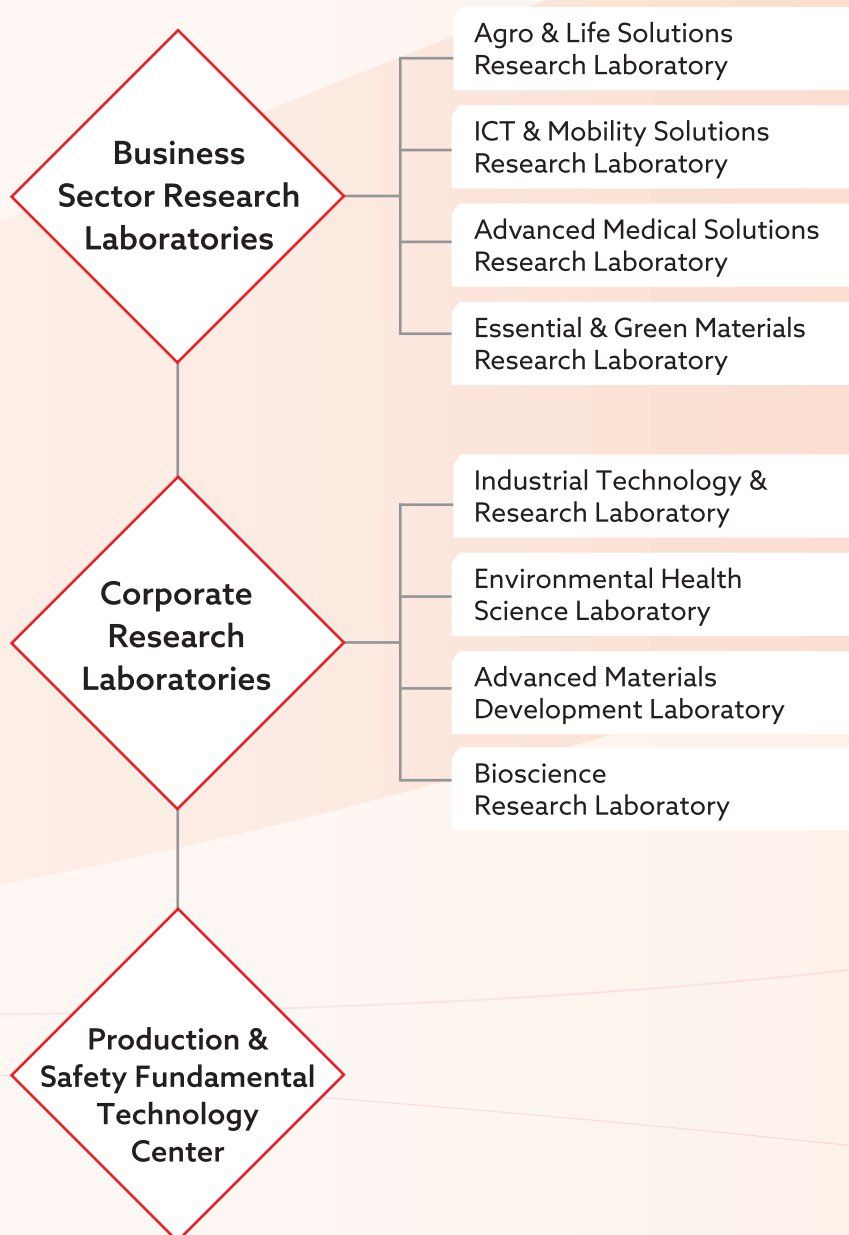
Sumitomo Chemical's six core technologies have been cultivated through extensive research activities over the years. The Company's basic strategy is to deepen these six core technologies, further enhance their basic technologies, and create high value-added products and technologies through combining them with technologies from different fields.



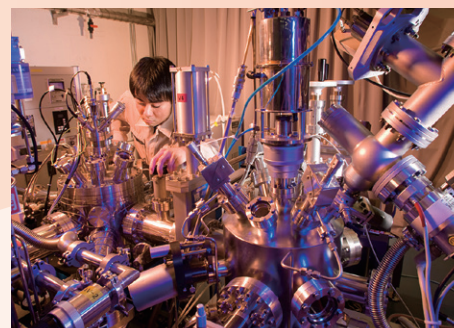
Six Core Technologies



Research and Development Organization



Agro & Life Solutions Research Laboratory
Evaluation test on chemicals inside a greenhouse



Advanced Materials Development Laboratory
Surface analyzer

Sumitomo Chemical's research organization comprises the Business Sector Research Laboratories, the Corporate Research Laboratories, and the Production & Safety Fundamental Technology Center. At the Business Sector Research Laboratories, both manufacturing and sales personnel are making concerted efforts on research and development (R&D) of products that maintain, strengthen, and expand their business activities, and R&D of basic and elemental technologies. The Corporate Research Laboratories are engaged in long-term research projects, including development of technologies required to enter new business fields, development of common base technologies that will give a competitive edge to sustain core businesses, and development of next-generation products and processes. The Production & Safety Fundamental Technology Center promotes R&D to strengthen security, disaster-prevention measures, and competitiveness of plants, while actively supporting the company's manufacturing operations.

CORE
COMPETENCE

2

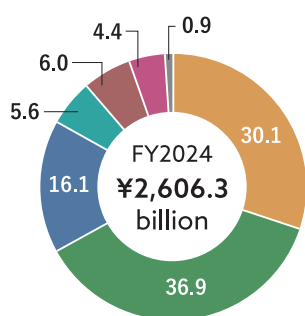
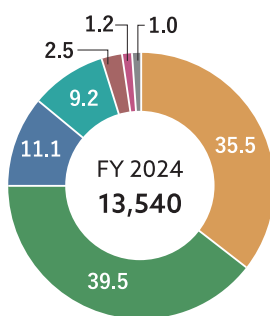
Access to Global Markets

Sumitomo Chemical has actively globalized all of its businesses to respond to changes in the global economy and social frameworks. The Company will continue to provide its solutions globally and create new value.

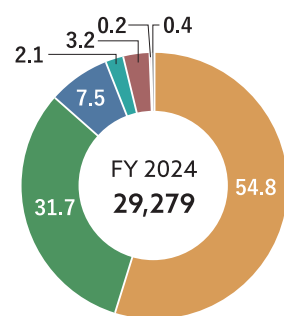


Information by Region

Sales Revenue by Region (%)

Patents Held by Region
(Non-consolidated) (%)

Employees by Region (%)



Japan Asia North America Europe Central and South America Middle East and Africa Oceania and Others



United States
Valent BioSciences LLC



Brazil
Sumitomo Chemical Brasil
Indústria Química S.A.



China
Sumika Electronic
Materials(Wuxi) Co., Ltd.



South Korea
Dongwoo Fine-Chem Co., Ltd.

Domestic Facilities



Head Office (Tokyo)



Head Office (Osaka)



Misawa Works



Ibaraki Works



Advanced Materials Development Laboratory (Tsukuba)



Chiba Works



Agro & Life Solutions Research Laboratory (Takarazuka)



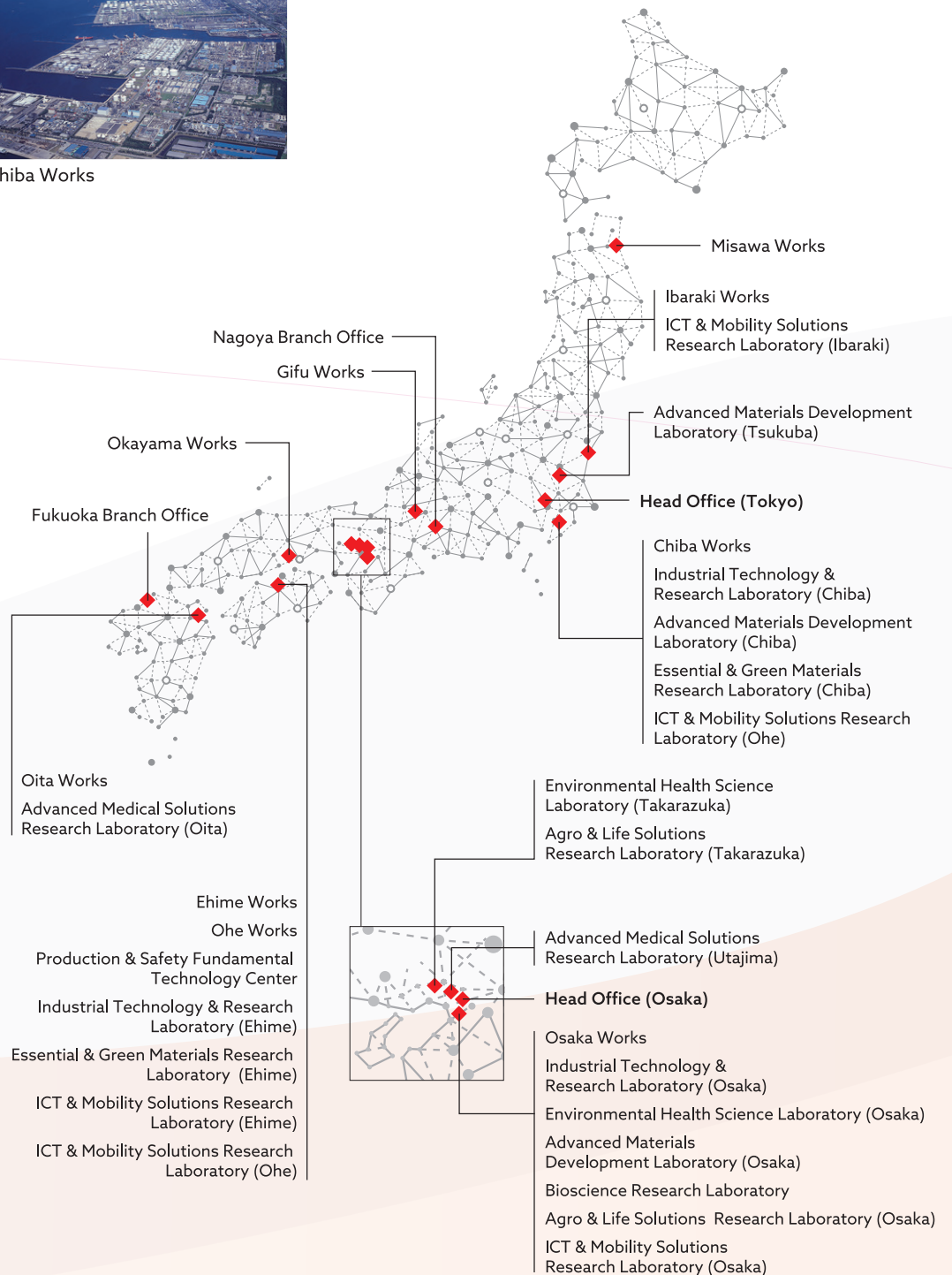
Osaka Works



Ehime Works, Ohe Works



Oita Works



CORE
COMPETENCE

3

Our Highly Engaged and Diverse Human Resources

The Sumitomo Chemical Group has about 30,000 employees working around the world. Some of the greatest strengths of the Group are the engagement of our employees, in other words, the high degree of connection between the awareness of our employees and our business activities, and the diverse backgrounds of our human resources.



Promoting the Corporate Philosophy: "Sumitomo Chemical Group JIRI-RITA ACTION"

At the Sumitomo Chemical Group, every executive and employee shares the corporate philosophy, deepens their understanding of sustainability, and works together as a unified group to put the corporate philosophy into practice. To encourage the participation of all members, we have been implementing the "JIRI-RITA ACTION" initiative since 2014.

Initiative for FY 2025

For fiscal year 2025, the theme is "Take on the Challenge: Be an Innovative Solution Provider! Implement 'Jiri-Rita Koushi-Ichinyo' Through Our Work." In order to enhance corporate value through each individual's practice of "Jiri-Rita Koushi-Ichinyo" in their own work, the initiative will evolve to focus on discussions with colleagues and will be conducted from August to November 2025.



Sumitomo Chemical Group calls on each and every member to take on new challenges toward our long-term vision of becoming an "Innovative Solution Provider."



Mascots: JIRI and RITA

Human Resources

"People" are a major source of corporate competitiveness, and securing and developing human resources is a key issue for our future value creation. Sumitomo Chemical will promote the securing and development of human resources, which we consider to be our most important management resource, from a long-term perspective and achieve structural reforms and sustainable growth in our Group through enhanced engagement.

DE&I

We have identified "Diversity, Equity & Inclusion (DE&I)" as one of the material issues to be addressed as management priorities. We aim to have employees embrace and leverage each other's richly diverse knowledge and experiences, enabling each employee to fully demonstrate their proficiencies and abilities, thereby driving growth throughout the entire Group.

Percentage of female employees in managerial positions and above

9.1 %
(FY2024)

Percentage of male employees taking maternity leave and related leaves

97.5 %
(FY2024)

Human Resources Development and Growth

In accordance with our personnel system's basic philosophy of "development and growth," we have established a purpose-driven training system that offers programs employees can select and attend on their own initiative. This system features a training structure that is organized by objective and employee classification and supports the independent efforts of employees to learn and grow.

Investment in Training (FY2024 - Non-consolidated)

Results

Approx. **¥310,000**
/ year per person

Target

¥300,000
/year per person or more continuously

Time Spent on Training (FY2024 - Non-consolidated)

Results

59.1 %
of regular working hours

Target

50% or more of all employees taking self-selected training programs by FY2024

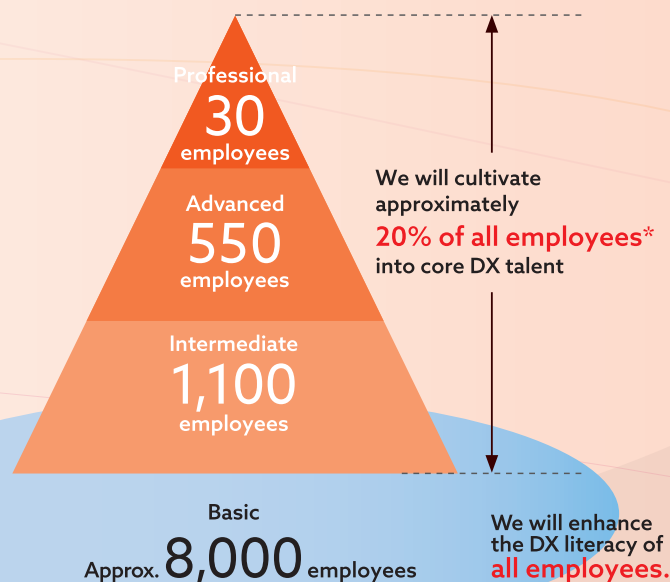
Cultivating DX Talent

Digital transformation (DX) is the engine that accelerates Sumitomo Chemical's transformation and growth in today's rapidly changing business environment. Through DX, we will accelerate both the enhancement our business competitiveness and the creation of new value.

We are committed to cultivating DX talent who will serve as the foundation on which we will promote DX, enabling them to accurately identify issues in their own work, and enhancing our business processes utilizing DX.

To achieve business process transformation through DX, Sumitomo Chemical is focusing on cultivating core DX talent and improving DX literacy among all employees.

We aim to assign DX talent specialized in the operations of each department —R&D, production, business and corporate units— to these departments, and are working to develop approximately 20% of all employees as core DX talent.



*Number of employees as of the end of fiscal year 2024

Sumitomo Chemical currently operates businesses in four sectors – Agro & Life Solutions Sector, ICT & Mobility Solutions Sector, Advanced Medical Solutions Sector, and Essential & Green Materials Sector – and supplies solutions (technologies and products) worldwide that underpin a wide variety of industries and people’s lives.

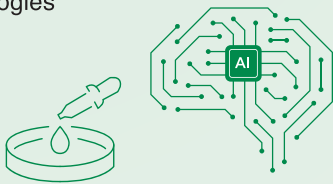
Agro & Life Solutions Sector

AgroSolutions Division - Japan / AgroSolutions Division - International / Environmental Health Division

The Agro & Life Solutions Sector is engaged in the manufacture and sale of crop protection products, fertilizers, feed additives, household insecticides, and products for control of infectious diseases. By providing these products, we aim to contribute to a stable supply of crops, help increase food production in response to an increase in the world population, prevent the spread of infectious diseases, and achieve hygienic and healthy lives.

Technological assets

- ◆ Chemical technology platform such as synthetic chemistry, analytical chemistry, chemical biology, environmental science
- ◆ Active ingredient discovery capability based on latest technologies and AI utilization



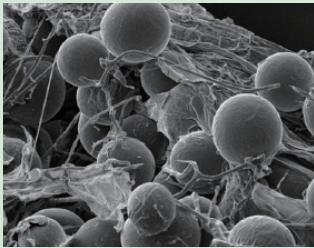
Business assets

- ◆ Global footprint across key agricultural markets worldwide, including the Americas and India
- ◆ Over 60 years of experience in the biorational and botanical business



Solutions we provide

- Environmentally friendly and effective crop protection products
- Herbicides suitable for carbon sequestration and soil health restoration, such as in no-till farming
- Rhizosphere microbial materials that contribute to climate change mitigation by sequestering carbon
- Insecticidal ingredients that help prevent the spread of infectious diseases and promote public health



Mycorrhizal Fungi
(Rhizosphere Microbial Inoculants)



Various crop protection chemicals, including insecticides and herbicides



DL-methionine used as feed additives



Products used for insecticides



Olyset™ Plus



Fruit orchards utilizing biorational products



Cultivation of pyrethrum used in botanical products

ICT & Mobility Solutions Sector

Display Materials Division / Semiconductor materials Division / Advanced Inorganic Products Division / Advanced Materials Division / Battery Materials Division

As society undergoes a period of transformation driven by rapid technological innovation—such as the rise of AI—we are committed to creating new value. To achieve this, we manufacture and supply a wide range of products, including display materials like polarizing films, semiconductor materials such as various chemicals and photoresists, functional materials and battery components for next-generation mobility like engineering plastics, as well as advanced inorganic products such as high-purity alumina and compound semiconductors that support energy-saving societies.

Technological assets

- ◆ Miniaturization and higher purities
- ◆ Thin-film forming and ultrafine particle processing
- ◆ Photosensitive material design and performance resin design
- ◆ 1,000 R&D staff globally



Business assets

- ◆ Global supply and development infrastructure in Japan, South Korea, China, and the US built on upfront investments
- ◆ High value-added portfolio achieved through structural reforms
- ◆ Capturing growth opportunities through market-in strategy



Solutions we provide

Semiconductor-related materials

- Cutting-edge photoresist and cleaning agents that support cutting-edge applications
- Semiconductor chemicals and back-end process materials that support diverse needs of semiconductors

Display materials

- Display materials that support our proprietary ultra thin film and higher resolutions (OLED and automotive, etc.)



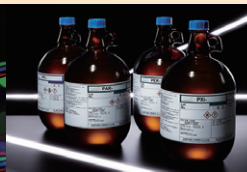
Semiconductor Substrates



Polarizing films "SUMIKARAN™" Touch screen sensor panels



Color Resists "DyBright™"



Photoresist "SUMIREST™"



Compound Semiconductor materials



High purity alumina



Super Engineering Plastics



Resorcinol



Separator "PERVIO™"

Advanced Medical Solutions Sector

Pharma Solutions Division / S-RACMO Co., Ltd. / RACTHERA Co., Ltd.

To meet diverse medical and healthcare needs and contribute to healthier, more fulfilling lives, we are developing business in advanced small molecule APIs, oligonucleotides for gene therapies using genome-editing, and regenerative medicine/cell therapy CDMO*. In addition, we are also engaged in R&D for regenerative medicine and cell therapy.

*CDMO: Contract Development and Manufacturing Organization

Technological assets

- ◆ Advanced synthesis capabilities in advanced small molecule APIs
- ◆ Synthesis technology in high-purity long-chain nucleic acids
- ◆ Leveraging biotechnology in cutting-edge technology inducing stem cell differentiation



Business assets

- ◆ Comprehensive responsiveness cultivated in the Life Science business (development, production technology, regulatory affairs, quality management and analysis)
- ◆ Flexible response to demand
 - Advanced small molecule APIs and oligonucleotide CDMO at 3 plants in Japan (Okayama, Gifu, and Oita)
- ◆ Front-runner in commercialization of iPS cells
 - R&D: RACTHERA Co., Ltd.
 - CDMO: S-RACMO Co., Ltd.



Solutions we provide

- Cutting-edge regenerative medicine/cell therapy products, such as the world's first iPS cell-derived cell therapy for the treatment of Parkinson's disease
- CDMO business leveraging advanced manufacturing technologies (Advanced small molecule APIs, Oligonucleotides, Regenerative medicine/cell therapy)



Active pharmaceutical ingredients



Manufacturing plant for Advanced small molecule APIs



Image of Oligonucleotide



Manufacturing plant for Oligonucleotides



Production facility for regenerative medicine/cell therapy [SMaRT]

Essential & Green Materials Sector

Essential Materials Division / Resin-related Business Development Dept. /
Polyolefins Division / Automotive Materials Division / MMA Division

Essential & Green Materials Sector produces synthetic resins such as polyethylene, polypropylene, and methacrylic resin, as well as various industrial chemicals and inorganic materials. These products are applied to various applications, underpinning wide variety of industries. Sumitomo Chemical also strives to develop products that contribute to reducing environmental load such as recycled plastics, as well as provide innovative solutions by licensing technologies.

Technological assets

- ◆ Catalyst design technology
- ◆ Process development technology
- ◆ Organic and polymer material functional design technology
- ◆ Participation in Green Innovation Fund projects (Largest scale in chemical industry)



Business assets

- ◆ Capabilities bringing together supply chains for a circular economy for resources
- ◆ Track record and alliances with third parties in the licensing business
- ◆ Capabilities running large-scale projects
- ◆ Meguri® branding of environmentally friendly products



Solutions we provide

- Innovative technologies that reduce environmental impact
 - Ethanol to propylene
 - CO₂ to methanol
 - PMMA chemical recycling



Pilot facilities manufacturing methanol from CO₂



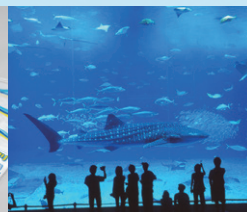
Automobile seats with cushion materials made using propylene oxide as a raw material



Automobile instrument panel made of polypropylene



Various products made using polyethylene



Large aquarium panel made of methyl methacrylate



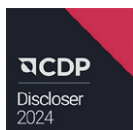
A plant in Thailand where Sumitomo Chemical licensed its propylene oxide production method

Sumitomo Chemical Group's Sustainability

The Sumitomo Chemical Group defines the Ground Rules for Promoting Sustainability as "Contributing to a sustainable society through business while achieving our own sustainable growth." This has been our stance based on Sumitomo's Business Philosophy of "Our business must benefit society at large, not just our own interests." In promoting sustainability, we are committed to generate both economic value ("Jiri") and social value ("Rita") through innovation as well as contribute to addressing critical issues that face international community, including the achievement of the Sustainable Development Goals (SDGs).

External Evaluations

Major awards and credits Sumitomo Chemical has received for its ESG initiatives are shown below.



CDP2024
"Climate Change A-"
"Water B"



Supplier Engagement
"Supplier Engagement
Leader"



EcoVadis
Sustainability Rating
2025
"Silver" Medal



The 6th ESG Finance
Awards Japan
Environment Sustainable
Category
"Bronze"



Health & Productivity
Management Outstanding
Organization in 2025 (Large
Enterprise Category)
"White 500"

 SUMITOMO CHEMICAL COMPANY, LIMITED



Official website
<https://www.sumitomo-chem.co.jp/english/>



Official YouTube channel
https://www.youtube.com/@sumitomochemical_official



2509-T