



Contribute to the Food Supply Advance Sustainable Agriculture

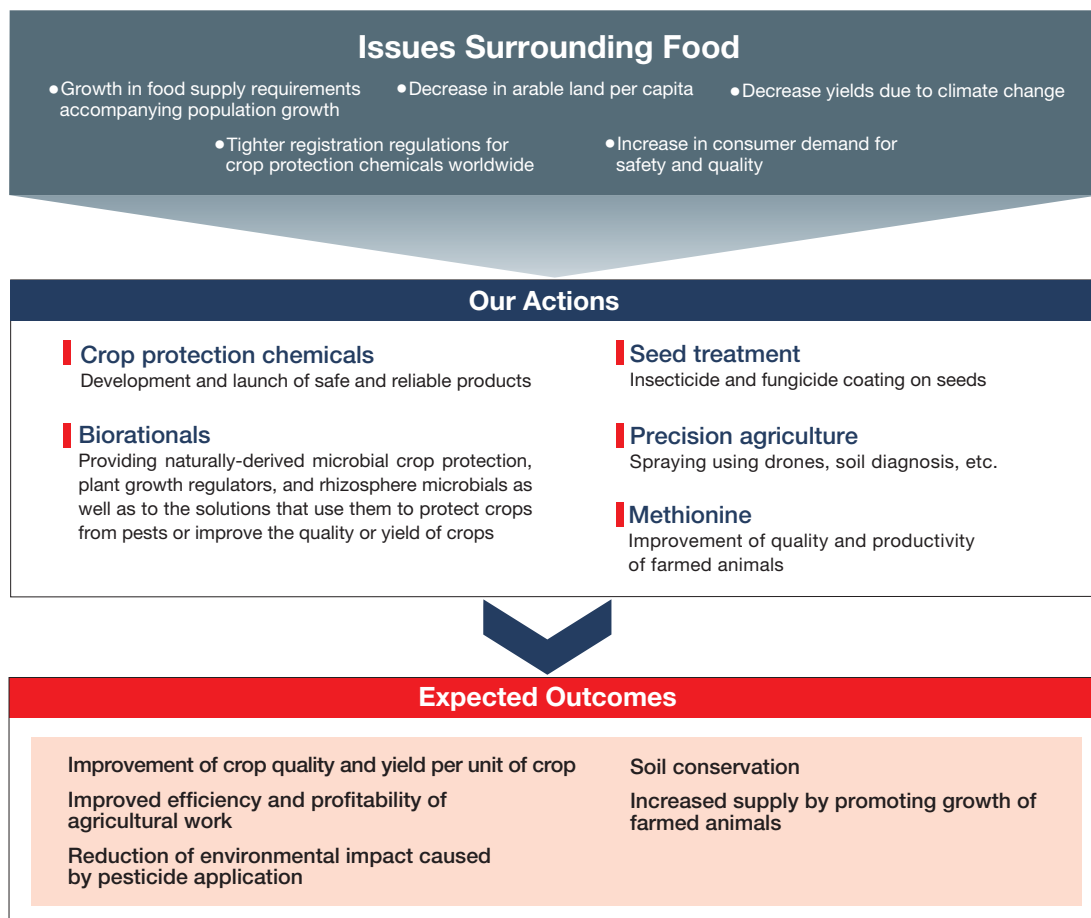
As the world population grows, demand for grain is expected to nearly double between 2000 and 2050 to 3.6 billion tons. Meanwhile, the world's arable land area has barely increased, and per capita arable land area continues to decline as the population grows. In order to realize a society in which people around the world have access to food and do not starve, we recognize the promotion of sustainable agriculture as an important issue for us to address.



Introduction to Sumitomo Chemical

Achieving Sustainable Agriculture

In order to realize a society in which people around the world have sustainable access to sufficient food, the world's agriculture must be sustainable and efficient. In response to this need, we are promoting a variety of initiatives through our agriculture-related business.



TOPICS

Promoting a dual approach to crop protection chemicals and biorationals for a sustainable agrochemical business

We are strengthening our agrochemical business by owning both crop protection chemicals and biorationals. While biorationals, which are derived from natural products, have advantages such as low environmental impact, they may be effective for a narrow range of pest control targets, but our broad product portfolio, including crop protection chemicals, enables us to meet the needs of crop production. By utilizing both product lines, it will be possible to take a multifaceted approach to crop management system proposals, new product development through the development of mixture products, and issues such as resistant pests and diseases.

Market size and growth rate of crop protection chemicals and biorationals

	Market size	Growth rate
Crop protection chemicals	60 billion dollars	Approx. 2%
Biorationals	7 billion dollars	10~15%