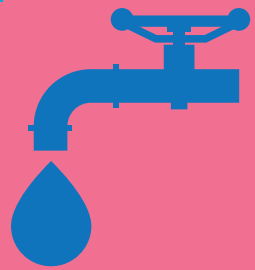


Improvement of Carbon Intensity Index

Domestic **2.2%**  
Overseas **5.5%**



Water Usage

Domestic **975** million tonnes  
Overseas **7** million tonnes



Lost-Workday Incident Rate

Sumitomo Chemical Group  
**0.14**



Percentage of Female Managers

Sumitomo Chemical  
**7.8%**



Number of beneficiaries of support for education in Africa

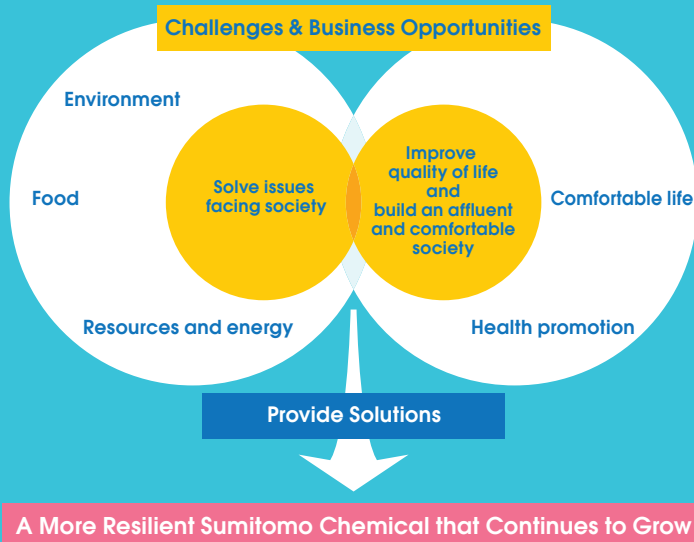
Over  
**12,000** people



Number of men taking child care leave

Sumitomo Chemical  
**142** people

## What Sumitomo Chemical Strives to Be



Sumitomo Chemical will continue to strive to solve problems that society faces in the areas of the environment, food, resources, and energy, and contribute to promoting health, building comfortable societies, and improving the quality of life for people around the world. Through these initiatives, we contribute to the UN Sustainable Development Goals (SDGs) too.



<https://www.sumitomo-chem.co.jp/english/csr/management/sdgs/>



### We are working to help Eco cars drive longer distances.

Using Sumitomo Chemical's Separators in lithium-ion secondary batteries of eco-friendly cars allows longer lasting power that enables greater travel distance. Our behind the scenes technological advancement contribute to solving environmental and energy issues in sustainable and eco-friendly ways.

### We are working to create a consistent supply of safe, high quality and abundant food.

Sumitomo Chemical's wide range of crop protection and enhancement materials help improve crop quality and enhance the yield of important food crops. Creating both conventional and biorational\* products, we help solve global market problems surrounding food abundance, food health and sanitation while contributing to more sustainable worldwide food production systems.

\*biorational  
The Sumitomo Chemical Group defines biorationals as crop protection products and solutions, derived from natural sources, such as microbial pesticides that protect crops from pests, and plant growth regulators and microbial agricultural materials that improve crop quality and yields.